



Universal Quick-Attach Equipment Only

Tools Required: Tape Measure

Affected Attachments: Grapples, Pallet Forks, Snow Equipment, & Post-Hole Diggers

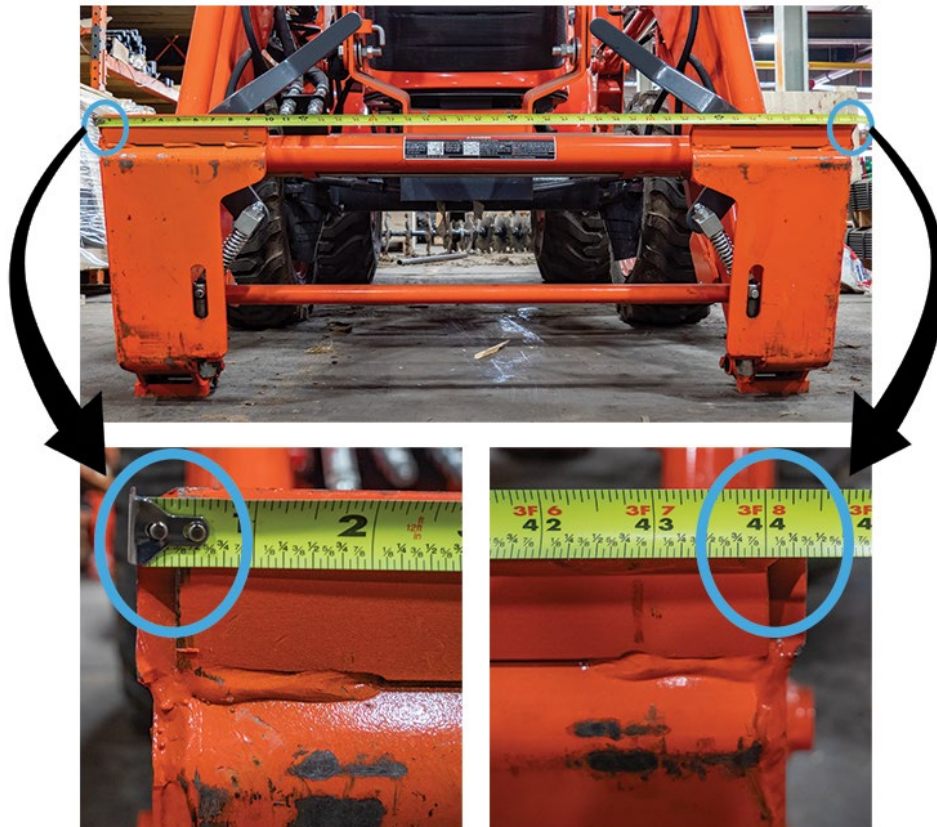
The unique design of our front-end loader equipment ensures a snug fit on most Universal Quick-Attach loader arms. Our addition of “ears” to the mounting plate reduces the amount of possible torque experienced during usage with specific attachments. This design improves the longevity of the attachment and protects your tractor from long-term damage.

Additionally, some loader series may have uncommon cross-supports that could interfere with the hose placement on our attachments. See page three (3) for more details.

Please verify ALL measurements to confirm compatibility before placing your order.

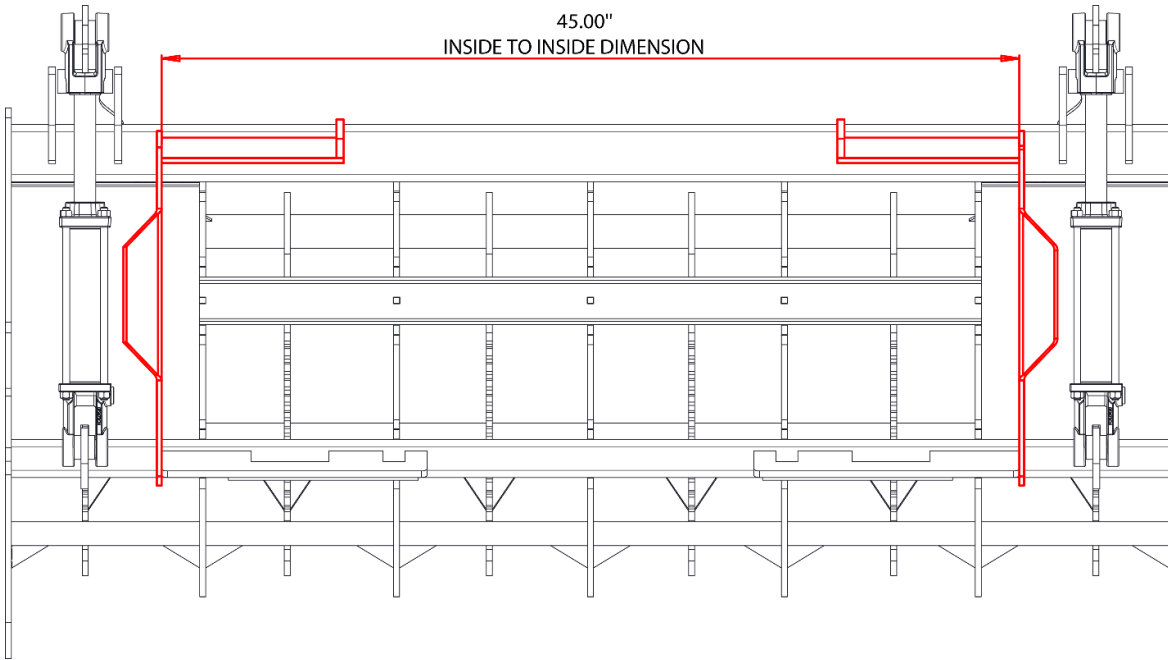
Measurement Instruction:

1. Measure the width from the farthest outside points of your front loader arms.



Front End Loader – Customer Measurement Instructions

2. If your loader width exceeds 45", please contact us before placing your order to discuss your options for customizing the equipment to accommodate your machine. (Certain redesign up charges may apply.)
3. All our Universal Quick-Attach front-end equipment will fit loader widths inside 45" from the farthest outside point



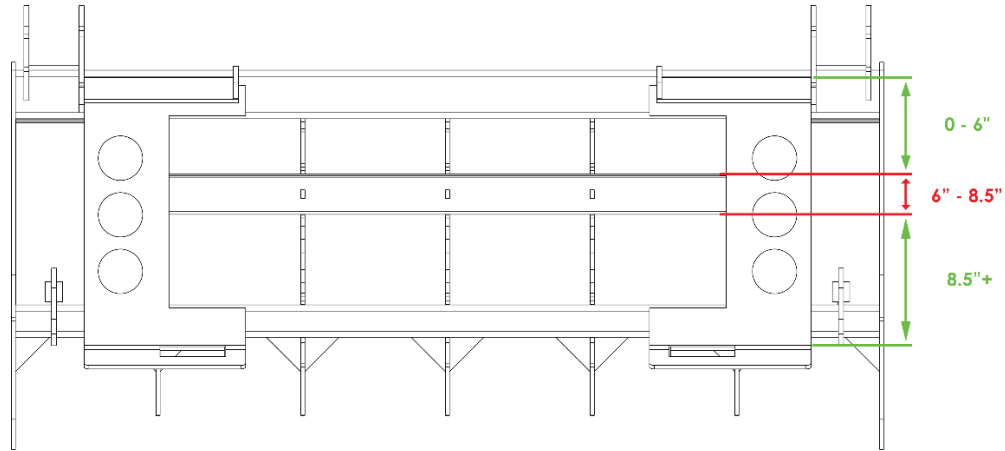
4. Measure the height from the Top of the SSQA plate down to the support bar that connects the plates together.



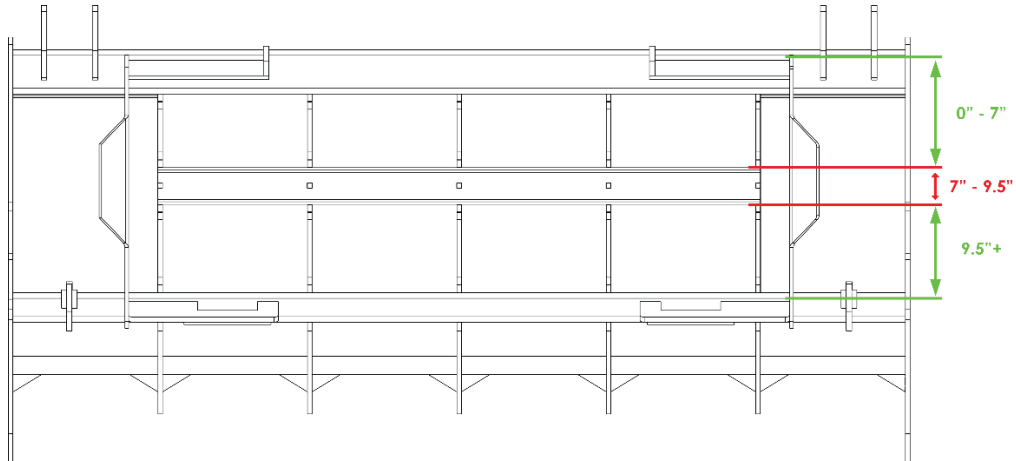
Front End Loader – Customer Measurement Instructions

Grapple C-Channel Locations:

1. **Sub-Compact Grapple:** Please contact us before placing your order if your loader support bar is between 6" and 8.5" from the top of your SSQA plate.



2. **Root Grapple:** Please contact us before placing your order if your loader support bar is between 7" and 9.5" from the top of your SSQA plate.



3. **Utility Root Grapple:** Please contact us before placing your order if your loader support bar is between 8.5" and 11" from the top of your SSQA Plate.

